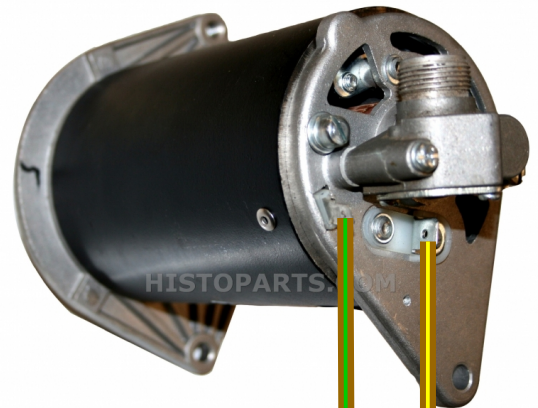


Wiring on Ford 1000-series 3-cylinders tractors, With "C"-prefixed serial numbers.



Screw to chassie ground connection

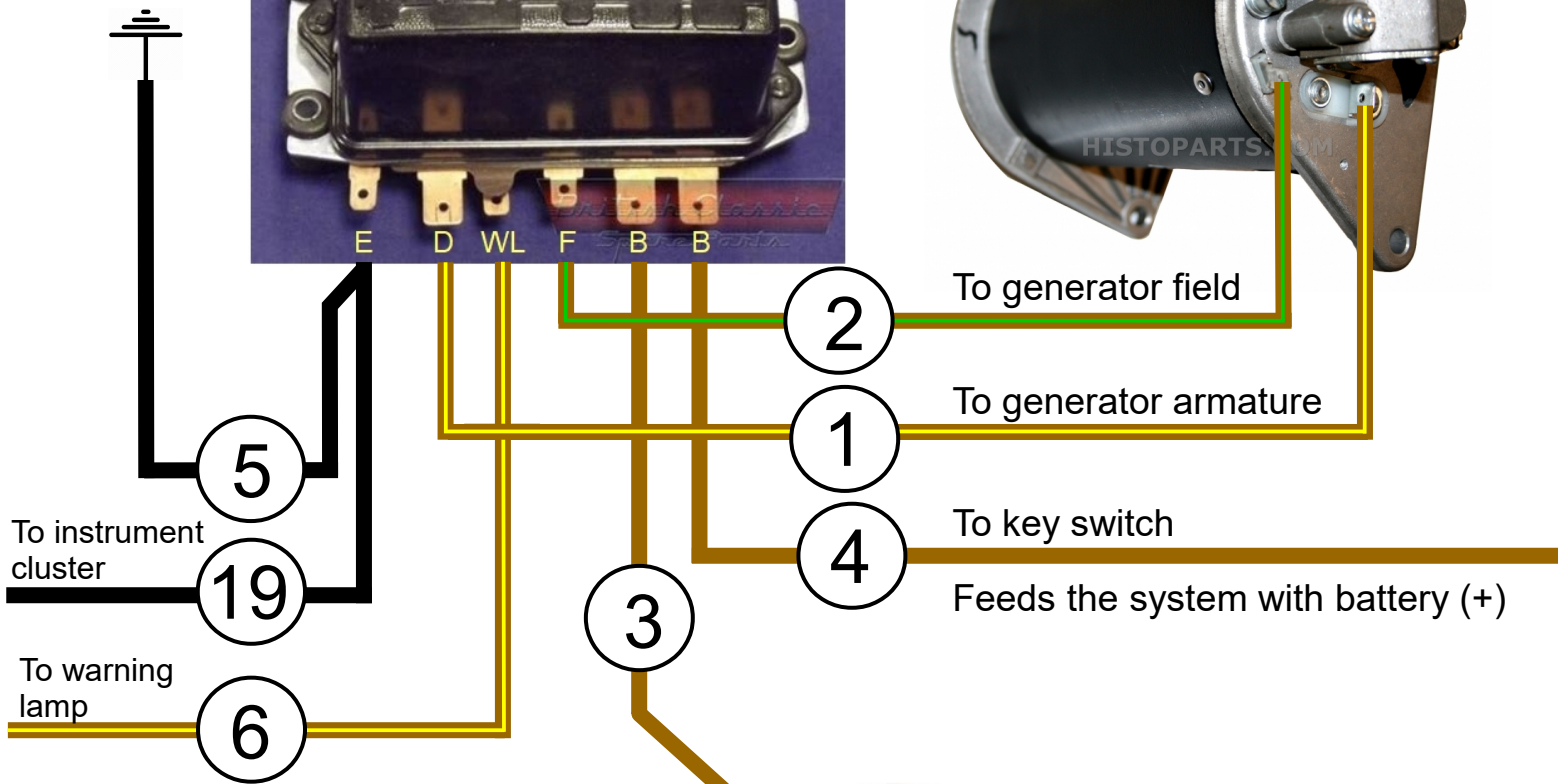


To generator field

To generator armature

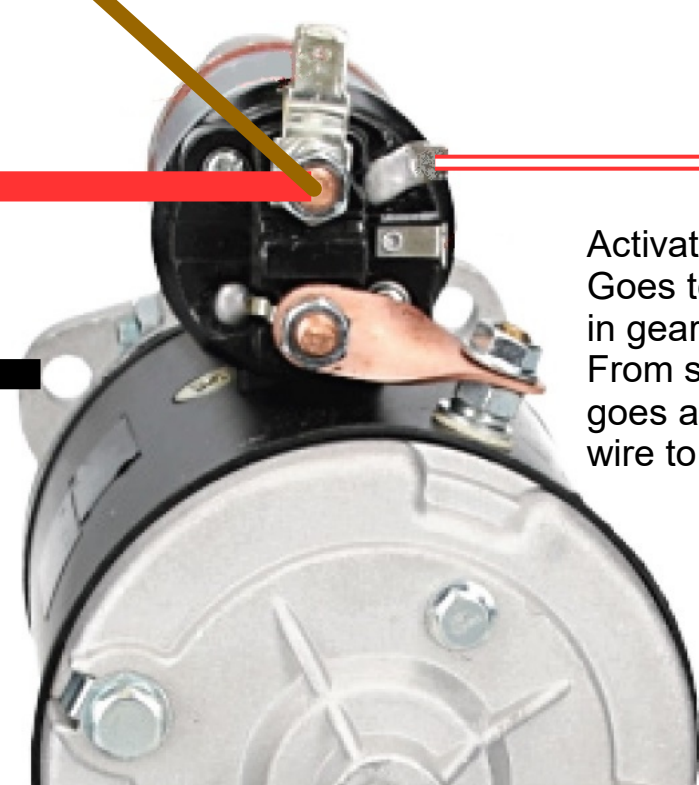
To key switch

Feeds the system with battery (+)



To battery (+) post

To battery (-) post



7

Activates the solenoid. Goes to safety switch in gearbox. From safety switch goes a white/yellow wire to the key switch.

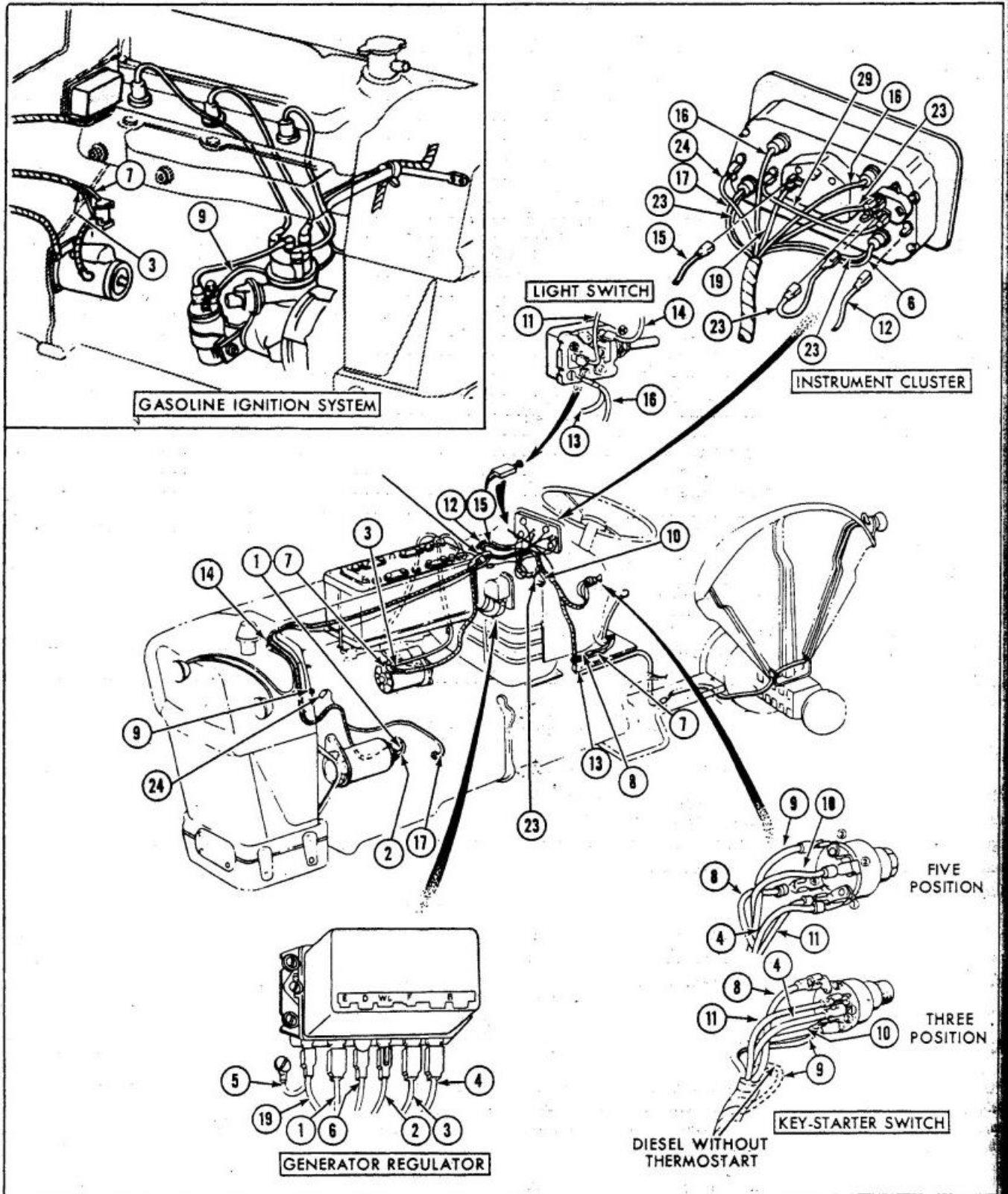


Figure 7
 Circuit Descriptions—Tractors with "C" Prefixed Serial Numbers

KEY TO WIRING CODES FOR FIGURE 7

(Circuit Descriptions—Tractors with "C" Prefixed Serial Numbers)

Wire No.	Wire Description	Wire Code
1	Regulator "D" to generator "D"	Brown-Yellow
2	Regulator "F" to generator "F"	Brown-Green
3	Regulator "B" to starting motor relay or solenoid	Brown
4	Regulator "B" to key-starter switch "batt"	Brown
5	Regulator "E" to ground	Black
6	Regulator "WL" to generator warning light	Brown-Yellow
7	Starting motor relay to safety-starter switch	White-Red
8	Key-starter switch "start" to safety-starter switch	White-Yellow
9	Thermostart connection to key-starter switch connection	Brown-Red
10	Key-starter switch "aux" to fuse	White
11	Key-starter switch light terminal to light switch	Brown
12	Fuel sender to fuel gauge	Green-Black
13	Light switch to tail lamp connection	Red
14	Light switch to headlamp connection	Blue-Red
15	Fuel sender ground to instrument panel ground	Black
16	Light switch to panel light connection	Red-White
17	Oil pressure switch to oil pressure warning light	White-Brown
19	Regulator "E" to instrument panel ground	Black
23	Fuse to voltage stabilizer and warning lights	White
24	Temperature gauge to temperature sender assembly	Green-Blue
29	Voltage stabilizer to temperature gauge	White

- Carefully pull the cluster assembly away from the rear hood panel assembly and disconnect the electrical wires and Proof-Meter cable assembly.
- Remove the cluster assembly and remove the sealing gasket.

B. Disassembly

- Remove the four screws and lock washers, Figure 9, which retain the case assembly to the bezel assembly.
- Loosen the two screws and washers which retain the Proof-Meter assembly to the case assembly.
- Remove the terminal nuts and lock washers which retain the gauges to the case assembly. Remove the terminal and two insulating washers and remove the gauges.
- Remove the two screws and lock washers which hold the constant voltage stabilizer to the case assembly.

C. Assembly

- Attach the constant voltage stabilizer, Figure 9, to the case assembly. Secure tightly with the two screws and lock washers.

- Insert the gauges in the case assembly (fuel gauge on left side, temperature gauge on right side—as viewed from the front of the cluster). Place the two insulated washers (slotted washer over the thin washer) and blade terminal over the gauge studs and secure with the nuts and lock washers.

- Insert the Proof-Meter assembly into the case assembly. Secure the assembly with the two screws and lock washers. Be sure the two rubber seals and flat washers are placed between the case and the lock washer (seals against the case).

- Position the case assembly on the bezel. Be sure the sealing strips are fitted between the bezel and the assembly. Secure the assembly with the four screws and lock washers.

D. Installation

- Place the instrument cluster on the rear hood panel and connect the main harness connectors, warning light, and instrument panel sockets as shown in Figures 6 or 7. Connect the Proof-Meter cable. If it is difficult to connect the cable, first remove the cable from the generator then connect the cable upper end to the instrument cluster. Reconnect the cable to the gener-

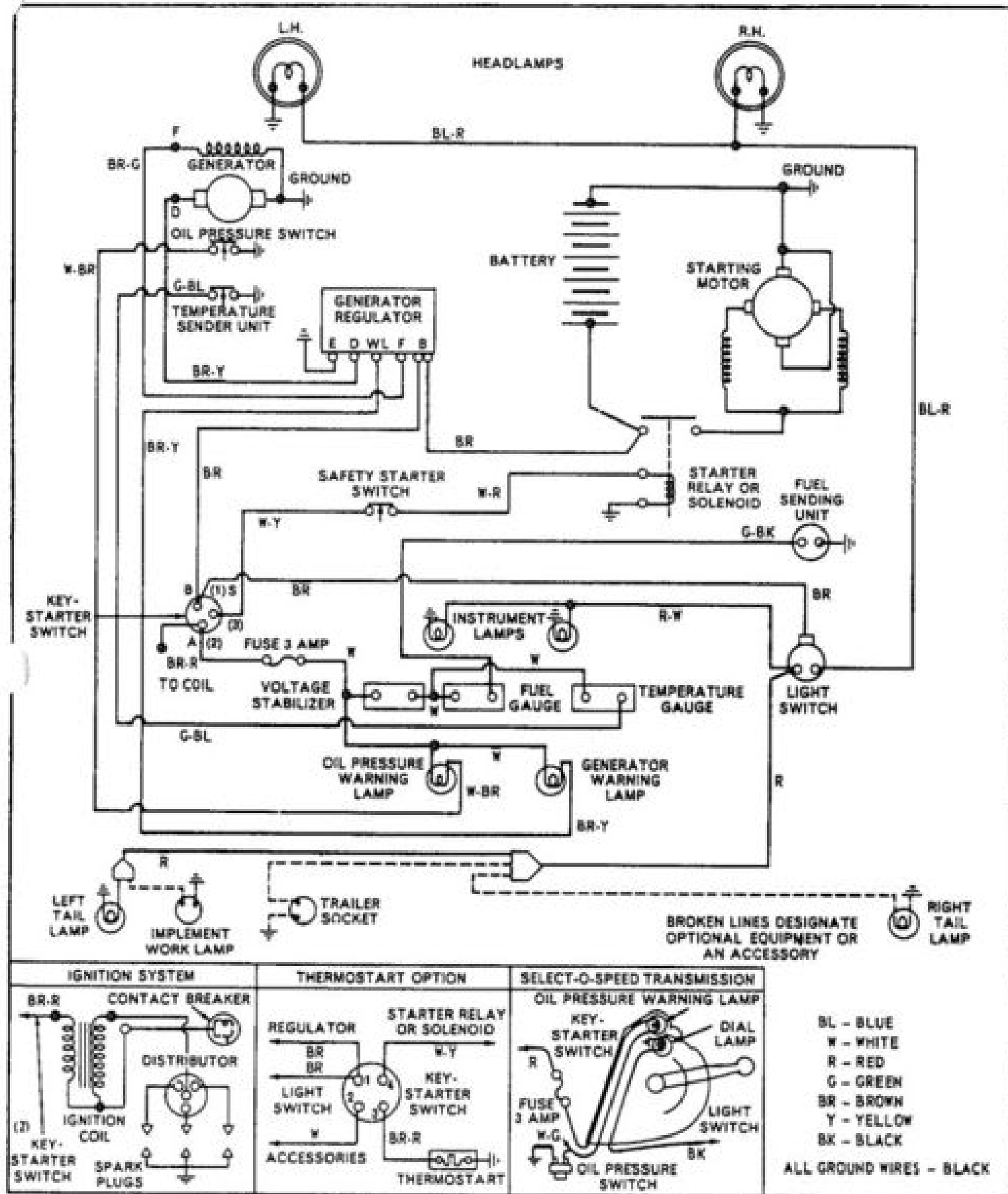


Fig. 160—Wiring diagram for all models with "C" prefix to tractor serial number. Refer to page 2 of this manual for serial number location. For tractors with "A" or "B" prefix to tractor serial number, refer to Fig. 161.